

Rivertide Suites

102 N Holladay Seaside, OR 97138

Oregon Society of Physicians Assistants

Must Book Direct: 877-871-8433. Not Bookable Online.

A valid credit card will be required at the time of reservations. It is recommended to call sooner as guest rooms are not being blocked or held out of inventory. Individual guestroom cancellations must be received by **4:00PM Fourteen (14) days prior** to arrival date to avoid a cancellation fee equal to the first night's room revenue. Check in begins at 4:00PM and check out is at 11:00AM.

Property Features Include:

Complimentary Continental Breakfast 7am-10am Daily

Indoor Pool and Hot Tub

Exercise Room and Business Center

Unique view from rooftop deck, the Crow's Nest.

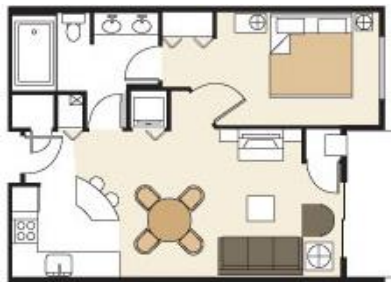
Located 0.1 miles from the Seaside Convention Center. *Walking distance!*

Room Amenities, Layouts, and Special Pricing:

All of our suites include a full kitchen with utensils, dining table, electric fireplace, washer & dryer, jetted tub, air conditioning, cable TV, DVD Player, hair dryer, iron, ironing board.



Studio/JUNIOR Suite
1 Queen / 1 Sofa Sleeper



One Bedroom KING Suite
1 King / 1 Sofa Sleeper



Two Bedroom Two Bath KING Suite
1 King / 1 Queen / 1 Sofa Sleeper

Room Type / View	Wednesday 09/07/22	Thursday 09/08/22	Friday 09/09/22	Saturday 09/10/22
Studio / JUNIOR Suite Mountain View	\$169	\$169	\$279	\$279
1 Bedroom KING Suite Mountain View	\$189	\$189	\$299	\$299
1 Bedroom KING Suite River View	\$199	\$199	\$309	\$309
2 Bedroom 2 Bath KING Suite Mountain View	\$249	\$249	\$359	\$359
2 Bedroom 2 Bath KING Suite River View	\$269	\$269	\$379	\$379

Rates are valid for up to 2 adults (4 on two bedroom). Additional adults will be \$20 plus tax per night.

***All room rates are net, non-commissionable and subject to the prevailing lodging tax.**